

## MP3-CD Soundmachine

AZ1856

Register your product and get support at  
[www.philips.com/welcome](http://www.philips.com/welcome)

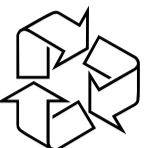
### User Manual



# PHILIPS

Meet Philips at the Internet  
<http://www.philips.com>

English

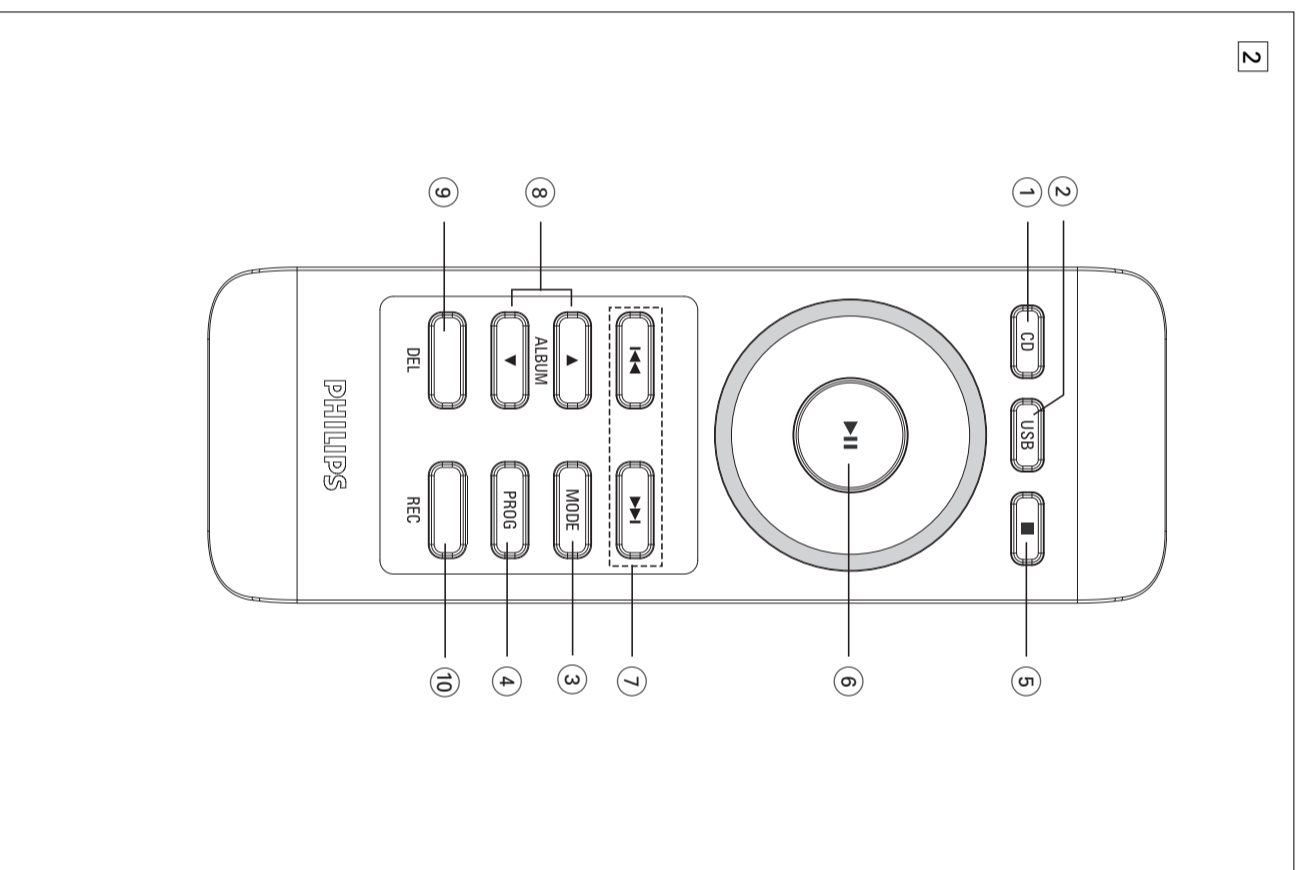
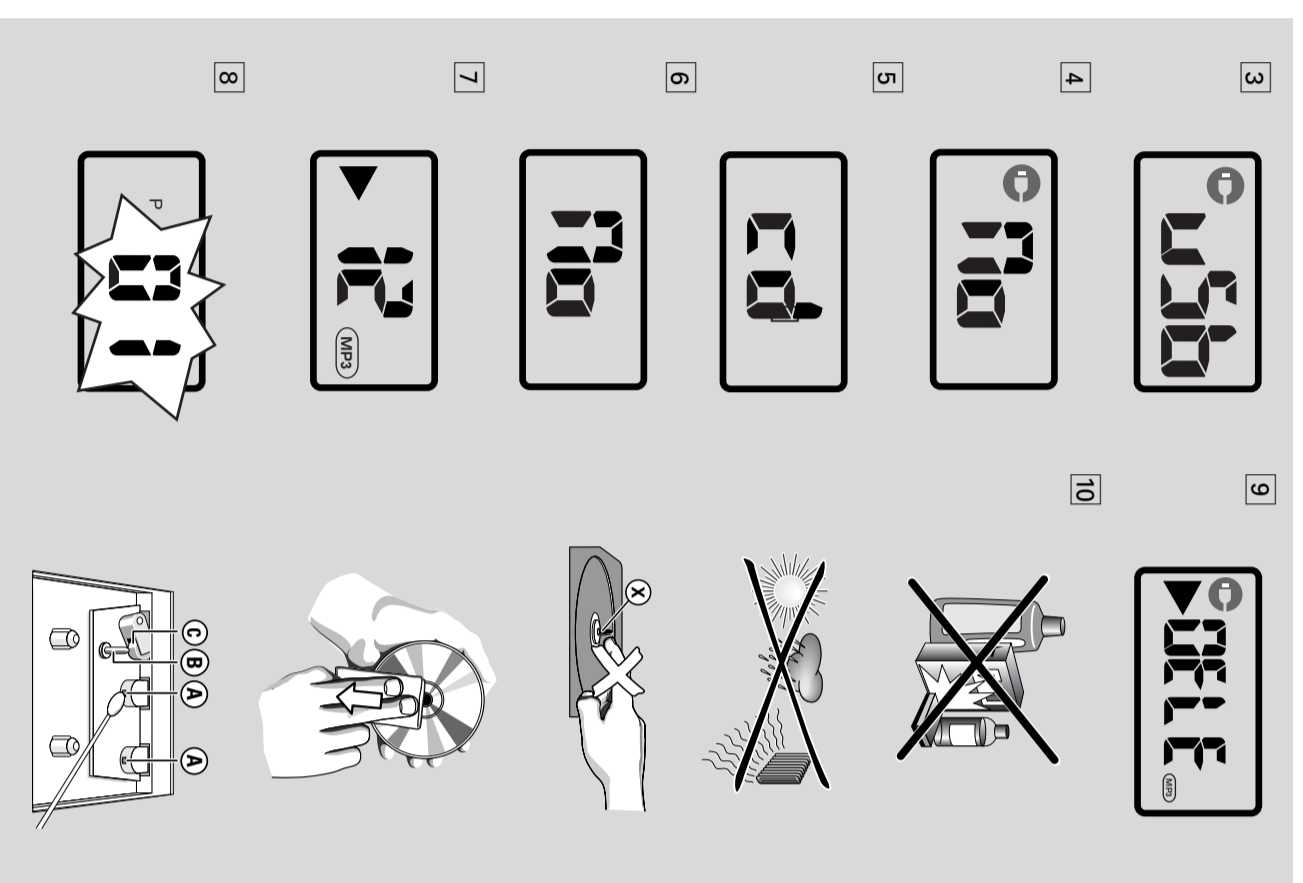
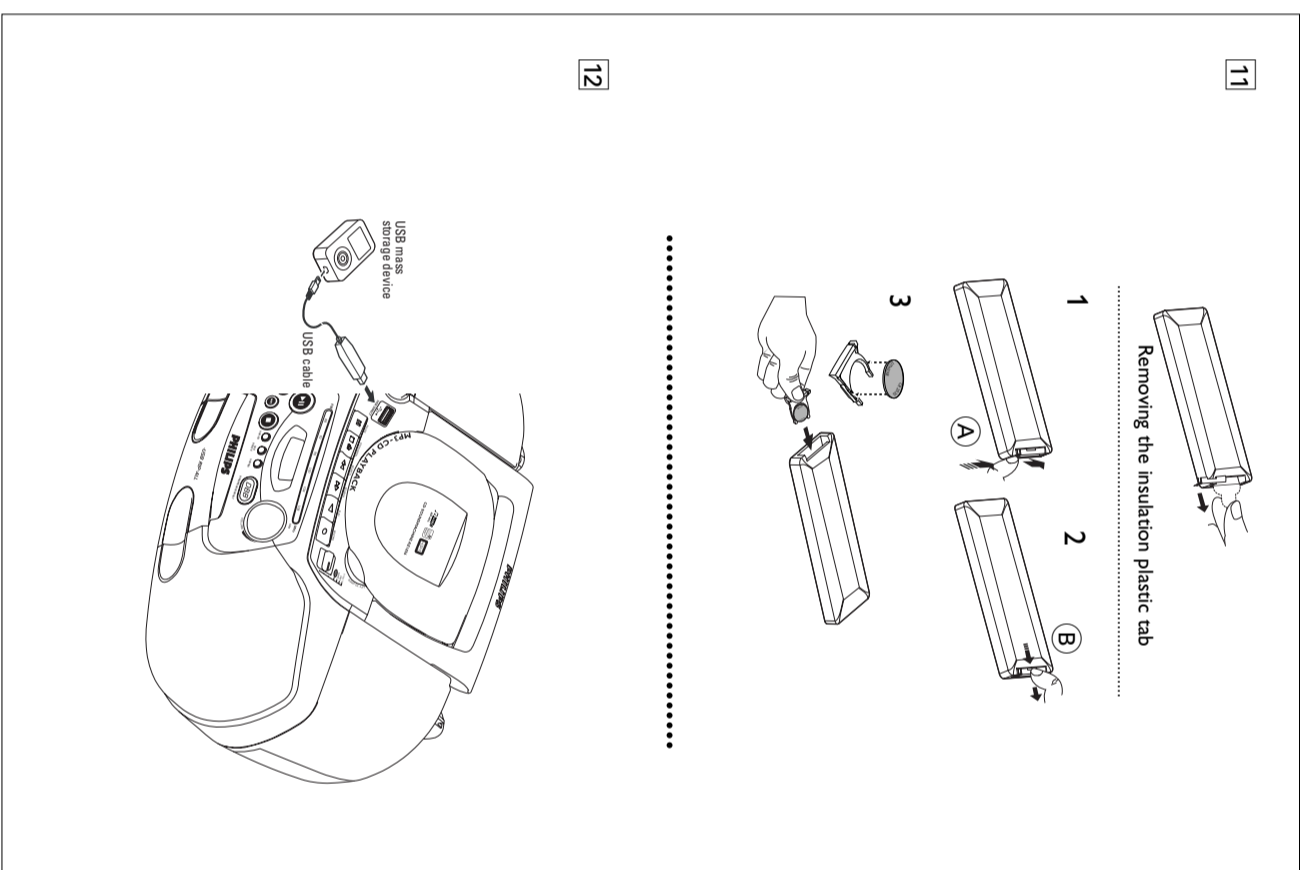
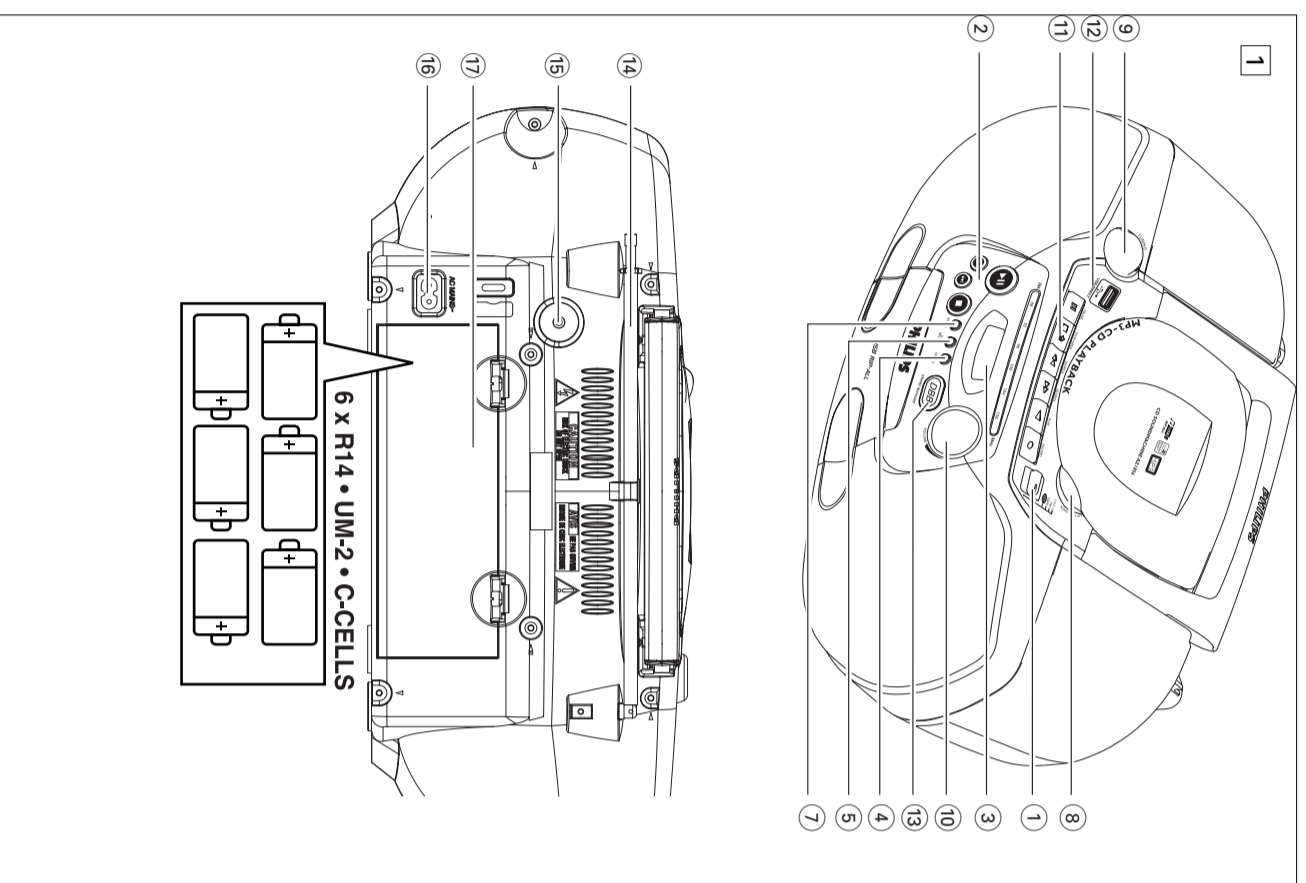


AZ1856



Printed in China

PDCC-ZHZC-0734

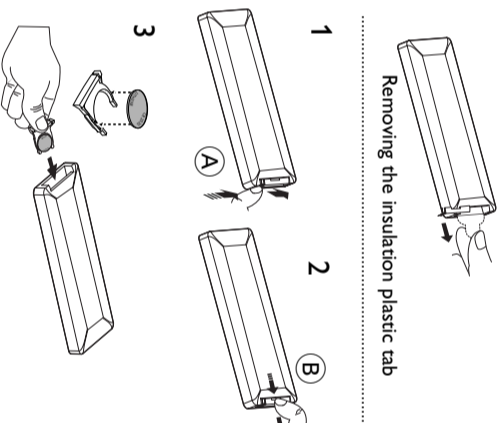


## English

**Congratulations on your purchase and welcome to Philips!**  
 To fully benefit from the support that Philips offers, register your product at [www.philips.com/welcome](http://www.philips.com/welcome).

### Supplied accessories

- AC power cord
- Remote control



.....

- 1 **Source selector: DISCUSB, FM, TAPE, OFF** – selects CD/MP3, CD (or USB mode), or radio – selects off the set
- 2 **PI** – starts or pauses disc/USB playback
- For disc USB play:  
 – slips to the beginning of a current/previous/ later track  
 – first searches backwards and forwards within a track  
 – stops disc/USB playback
- 3 **Display** – shows disc/USB play/functions to an external portable USB storage device/MP3 player
- 4 **USB REC** – copy one file or all files of a disc to an external portable USB storage device/MP3 player
- 5 **USB DELETE** – delete one file or all files of an external portable USB storage device/MP3 player
- 6 **IR** – infrared sensor for remote control
- 7 **USB/CD** – enters disc or USB mode
- 8 **LEFT TO OPEN** – opens/closes the DISC door
- 9 **TUNING** – tunes to radio stations
- 10 **VOLUME** – adjusts volume level
- 11 **Cassette keys**
  - ▶ starts recording
  - ▶ starts playback
  - ▶ USB DIRECT – connects an external USB mass storage device
  - ▶ DBB – for a more vivid bass response

## Controls / Power Supply

**Back panel (See 11)**  
 Telescopic antenna – improves FM reception  
 15 1.5 mm stereo headphone socket – **Helpful hints:** The speakers will be muted when headphones are connected to the set

AC- MAINS – inlet for power cord  
 R-14 UM2 C-cells

### Remote control (See 2)

- 1 **CD** – enters disc mode
- 2 **USB** – enters USB mode
- 3 **MODE** – selects different play modes: e.g. **REP** **REPEAT** (random order) **ALL** or **SHUFF** (shuff. order)
- 4 **PROG** – programs tracks and reviews the program
- 5 – stops DISCUSB playback
- 6 **PI** – starts/ pauses DISCUSB playback
- 7 **For disc USB play**
  - ▶ last searches back and forward
  - slips to the beginning of a current/previous/ later track
- 8 **ALBUM** / **▼** / **▲** – selects albums
- 9 **DEL** – deletes one file or all files stored on the external USB device
- 10 **REC** – copy one file or all files of a disc to an external portable USB storage device/MP3 player

- 9 **TUNING** – tunes to radio stations
- 10 **VOLUME** – adjusts volume level
- 11 **Cassette keys**
  - ▶ starts recording
  - ▶ starts playback
  - ▶ USB DIRECT – connects an external USB mass storage device
  - ▶ DBB – for a more vivid bass response

## Basic Function/ Radio

### Basic functions

#### Switching on/off the set

- 1 To switch on, adjust the **source selector** to **DISCUSB, FM** or **TAPE** as desired.
- 2 To switch off, adjust the **source selector** to **OFF**.

**Adjusting sound**  
 Adjust the sound with the **VOLUME** and **DBB** controls.

### Radio reception

- 1 Push the **source selector** to **FM**
- 2 Turn **TUNING** to tune in a radio station.
- 3 To switch off the radio, adjust the **source selector** to **OFF**.

#### Helpful hints:

- To improve reception  
 For **FM**, extend, incline and turn the telescopic antenna. Reduce its length if the signal is too strong

## Power Supply

### Power Supply

Whenever convenient, use the power supply cord if you want to conserve battery life. Make sure you remove the plug from the set and wall outlet before inserting batteries.

**Batteries**  
 Main set (See 11)  
 Insert 6 batteries, type **R-14, UM2** or **C-cells** (not included, preferably alkaline) with the correct polarity.

### Remote control

**Important!**  
 Before using the remote control, remove the **Insulation Plastic tab** as shown in figure 11.

If the remote control does not function correctly or the operating range is reduced, replace the battery with a new **(CR2025) type battery**

- 1 Press and hold the latch (A) in the direction as shown in figure 11.
- 2 Simultaneously, pull the battery tray (B) out.
- 3 Replace a new battery, and fully insert the battery tray back to the original position. Incorrect use of batteries can cause electrolyte leakage and will corrode the compartment or cause the batteries to burst. Do not mix battery types: e.g. alkaline with carbon zinc. Only use batteries of the same type for the set.
- When inserting new batteries, do not try to mix old batteries with the new ones.
- Remove the batteries if the set is not to be used for a long time.
- Batteries contain chemical substances, so they should be disposed of properly.

## Using AC power

1 Check if the power/line voltage, as shown on the type plate located on the bottom of the set, corresponds to your local power supply. If it does not, consult your dealer or service center.

- 2 Connect the power cord to the **AC- MAINS** net and the wall socket. The set is now ready for use.
- 3 To switch the set off completely, withdraw the power cord from the wall socket.
- 4 Install the unit near the AC outlet and where the AC power plug can be easily reached.

**Important!**  
 Disconnect the power cord from the wall socket to protect your set during heavy thunderstorms. Children could seriously injure themselves as the free end of the cable may still be live if only the connector is removed from the MAINS socket at the back of the unit.

The type plate is located on the bottom of the set

**Auto power saving**  
 When the **source selector** is adjusted to **DISCUSB**, and the set is in the **PAUSE** position for 5 minutes, the set will be automatically switched to the stop position to save power.

**Helpful hints:**  
 To reduce unnecessary energy consumption, always adjust the **source selector** to **OFF** after using the set.

**CAUTION**  
 Use of controls or adjustments or performance of procedures other than herein may result in unsafe operation.

## MP3-CD / CD Player

### About MP3

The music compression technology MP3 (MPEG1 Audio Layer 3) significantly reduces the digital data of an audio CD while maintaining CD quality sound.

**Getting MP3 files:** you can either download legal music files from the internet to your computer hard disk, or create such files by converting audio CD files in your computer through appropriate encoder software. (128kbps bit rate or higher is recommended for MP3 files.)

**Creating a MP3 CD:** burn the music files from your computer hard disc on a CDR or CDRW using your CD burner.

#### Helpful hints:

- Make sure that the file names of the MP3 files end with: **.mp3** or **.wma**.
- Number of albums: maximum 500
- Number of tracks: maximum 1000
- The length of file name affects the number of tracks for playback. With shorter file names, more files can be burned on a disc.

### Playing a disc

This player plays Audio Discs including CDR/CD-RW/MP3 CD and WMA. Do not try to play a CD-ROM, CD-I, CD-V, DVD, DVD or computer CD.

**IMPORTANT!**  
 CDs encoded with **copyright protection technologies** by some record companies may be unplayable by this product.  
 DRM-protected WMA disc is not supported.

- 1 Adjust the **source selector** to **DISCUSB**
- ▶ Display shows **v.56** (see 3), or **f.no** if no USB device available (see 2)

## Cassette Recorder

### Playing a tape

- 1 Set the source selector to **TAPE**
- 2 Press **▶** to open the cassette holder.
- 3 Insert a recorded cassette.
- 4 Press **▶** and playback will start.
- 5 Adjust the sound using the **VOLUME** and **DBB** controls.
- 6 For brief interruptions, press **II**. Press **II** again to resume playback.
- 7 By pressing **◀▶**, fast winding of the tape is possible in both directions.
- 8 To stop playback, press **■▶**
- 9 The keys are automatically released at the end of the tape.

**Radio reception**  
 1 Push the source selector to **FM**  
 2 Turn **TUNING** to tune in a radio station.  
 3 To switch off the radio, adjust the source selector to **OFF**.

#### Helpful hints:

- To improve reception  
 For **FM**, extend, incline and turn the telescopic antenna. Reduce its length if the signal is too strong

### Cassette recording

**General information on cassette recording**

- Recording is permissible insofar as copyright or other rights of third parties are not infringed.
- This deck is not suitable for recording on C-RHOME (IEC II) or METAL (IEC IV) type cassettes. For recording, you should use standard type cassettes (type and brand on which the tabs have not been broken).
- Check and tighten stack tape before use with a pencil to avoid jamming the deck mechanism.
- The recording level is set automatically.

## Cassette Recorder

### Recording from radio

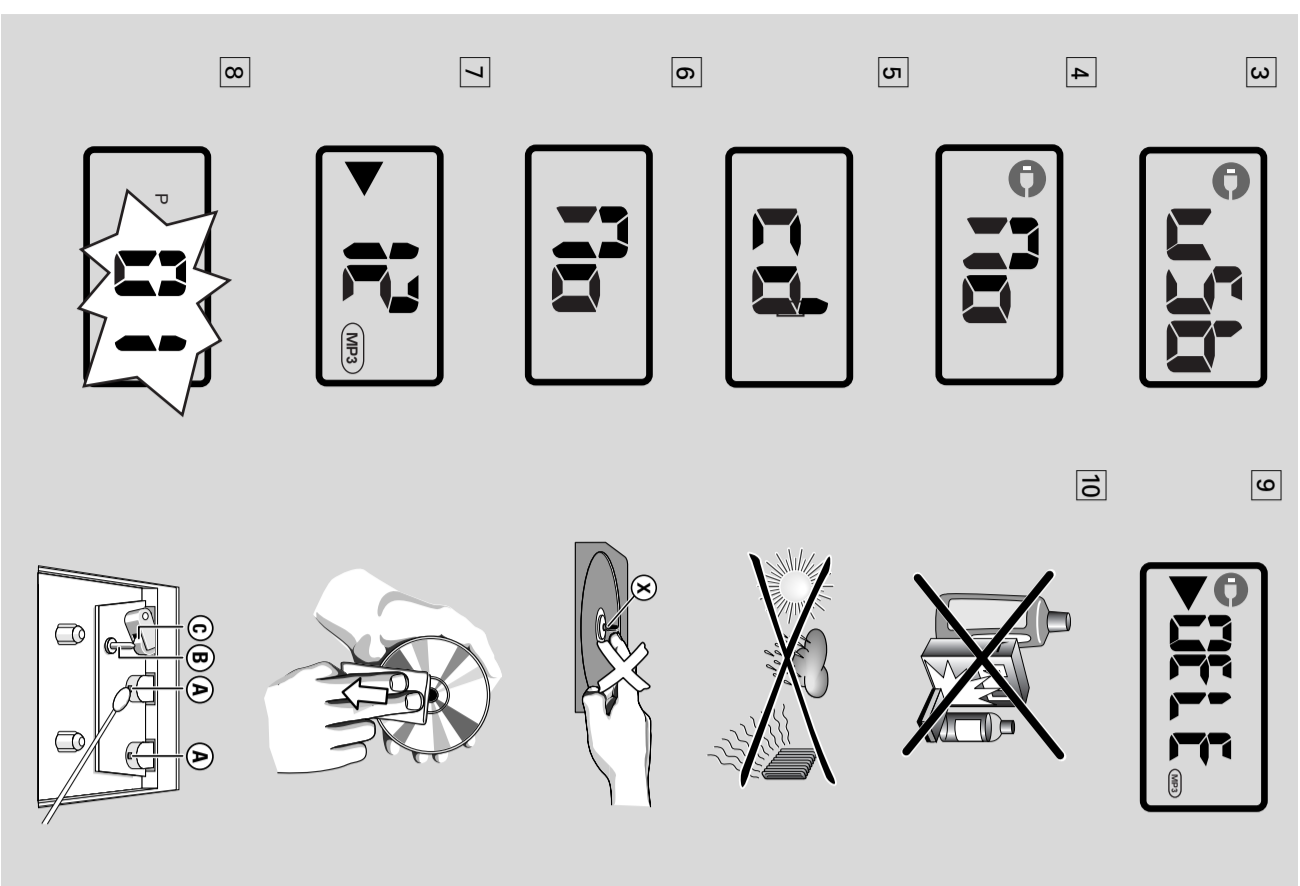
- 1 Set the source selector to **FM**
- 2 For radio, tune to the desired radio station using the **TUNING** knob.
- 3 Press **■▶** to open the cassette holder.
- 4 Insert a blank tape.
- 5 Press **●** to start recording.
- 6 For brief interruptions, press **II** again.
- 7 To stop recording, press **■▶**

**Synchro start CD/USB recording**

- 1 Set the source selector to **DISCUSB**
- 2 Insert a CD/USB device and if desired, programme disc track numbers.
- ▶ Press **USB/CD** to select CD/USB mode
- 3 Press **■▶** to open the cassette holder.
- 4 Insert a blank cassette.
- 5 Press **●** to start recording
- ▶ Playing of the CD programme starts automatically from the beginning of the programme.
- 6 For brief interruptions, press **II** to resume recording, press **■▶**
- 7 To stop recording, press **■▶**

### General information on cassette recording

- Recording is permissible insofar as copyright or other rights of third parties are not infringed.
- This deck is not suitable for recording on C-RHOME (IEC II) or METAL (IEC IV) type cassettes. For recording, you should use standard type cassettes (type and brand on which the tabs have not been broken).
- Check and tighten stack tape before use with a pencil to avoid jamming the deck mechanism.
- The recording level is set automatically.



**MP3-CD/ CD Player**

- 2 Press **USB/CD** to enter CD mode if USB is displayed.
    - Display will show **c.d** or **no** if no disc is in (See [10]).
  - 3 Open the disc door.
    - Insert a disc with the printed side facing up and press the disc door gently to close.
    - Display: The total number of tracks appears.
  - 4 The disc scanning of MP3-CD may run longer than audio CD.
    - Press **▶** to start playback.
  - 5 → Display **▶** and the current track number.
    - The current track number "....:" and file format will be displayed. (See [7]).
  - 6 To pause playback press **⏏**.
    - Display **⏏** and the current track number flash.
  - 7 Press **▶** again to resume playback.
    - To stop playback, press **■**.
  - 8 To stop playback, press **■**.
    - You open the disc compartment door.
    - You select **FM** or **OFF** position.
    - The disc has reached the end of the playback.
- Helpful hints:**
- In the pause/stop position, press **▶** to start playback.

**MP3-CD/ CD Player**

- Finding a passage within a track**
- 1 During playback, press and hold down **⏏** or **▶**.
    - The disc is played at high speed and low volume.
  - 2 When you recognize the passage you want, release **⏏** or **▶**.
    - Normal playback resumes.
- Programming tracks**
- You may store up to 40 tracks in the desired sequence. If you like, store any track more than once.
- For MP3-CD/WMA only:**
- 1 In the stop position, press **PROG** to start programming.
    - Display shows p 7, indicating the start of the program. And the track number "....:" flashes. (See [8]).
  - 2 Press **◀** or **▶** to select your desired track number.
    - For MP3-CD/WMA: First press **ALBUM ▲** once or more to find your album.
  - 3 Press **PROG** to store the desired track.
    - Display shows p 02, indicating the next program location available.
  - 4 Repeat steps 2 to 3 to select and store all desired tracks.
  - 5 Press **▶** to play the program.
    - To review your program In the stop position, press and hold **PROG** 3 seconds.
    - The display shows all the stored tracks in sequence.
- Helpful hints:**
- Display shows p 0 7, if no track is programmed.
  - If you try to store more than 20 tracks, no track can be stored and the display will show **FULL**.

**USB Connection**

- Using USB connectivity**
- AZ1856 is fitted with a USB port in the top in the stop position)
    - pressing **■** (twice during playback or once in the stop position)
    - selecting **FM** or **OFF** position;
    - opening the disc door;
  - The disc is played at high speed and low volume.
  - When you recognize the passage you want, release **⏏** or **▶**.
  - Normal playback resumes.
- Selecting different play modes**
- You can select and change the various play modes before or during playback, and combine play modes with **PROG**.
- REP ALL** – plays the current track continuously.
- SHUF REP ALL** – plays all tracks continuously in random order.
- SHUF** – plays all tracks in random order.
- 1 To select play modes, press **MODE** once or more.
  - 2 Press **▶** to start playback if in the stop position.
  - 3 To select normal playback, press **MODE** repeatedly, until the various modes are no longer displayed.
    - You can also press **■** to cancel your play modes.
- Compatible USB mass storage devices**
- When using AZ1856, you can use the following USB mass storage devices:
- USB flash memory (USB 2.0 or USB 1.1)
  - USB flash player (USB 2.0 or USB 1.1)
  - USB device which requires driver
  - Windows XP or Windows XP 64-bit not supported.
- Note:**
- In the USB flash player (or memory device), the stored contents are recorded using copyright protection technology. Such protected contents will be updatable on any other devices (such as AZ1856 device).
- Supported formats:**
- USB or memory file format: FAT12, FAT16, FAT32 (sector size: 512 ~ 4096 bytes)
  - MP3 bit rate (data rate): 32, 320 kbps and variable bit rate
  - WMA v9 or earlier
  - Directory nesting up to a maximum of 8 levels
  - Number of albums: maximum 500
  - Number of tracks: maximum 1000
  - ID3 tag v2.0 or later
  - File name in Unicode UTF8 (maximum length: 128 bytes)
- The system will not play or support**
- Empty albums an empty album is an album that does not contain MP3/WMA files, and will not be shown in the display.
  - Non-supported the formats are skipped. This means that e.g. Word documents, doc or MP3 files with extension, .dlr are ignored and will not be played.
  - AAC, WAV, PCM/INTS audio files
  - DRM protected WMA files
  - WMA files in Losses format

**USB Connection**

- Playing a USB mass storage device**
- 1 Make sure that your AZ1856 is being powered by AC mains or specified batteries.
  - 2 Adjust the **source selector** to **DISC/USB**.
    - Display shows **u.5b** (see [3]) or **no** if no USB device available (see [1]).
  - 3 Press **USB/CD** to enter USB mode if USB is NOT displayed.
    - Display will show **u.5b** (see [3]).
  - 4 As shown in figure [12], plug a compatible USB mass storage device to AZ1856's USB port marked "u". If needed, use a suitable USB cable to connect between the device and AZ1856's USB port.
    - The device will automatically power on.
    - If the device is not powered on, turn on the power manually, then re-connect it.
  - 5 → AZ1856's display shows USB and the total number of playable audio files (Max. displayed track number is 1000) stored on the device.
    - During MP3 and WMA recording, make sure the playback of the file you want to record is wholly completed before manually stop recording. Or any part of the file will not be recorded.
    - During recording, if the memory of the USB device runs out, playback will not continue.
- Helpful hints:**
- Make sure that file names of MP3 files end with **.mp3** and the file names of WMA files end with **.wma**.
  - For DRM protected WMA files, use Windows Media Player 10 (or later) for conversion. Visit [www.microsoft.com](http://www.microsoft.com) for details about Windows Media Player and WM DRM (Windows Media Digital Rights Management).
  - For USB device playing, if the display shows "DL", it means that the USB device is technically overloading AZ1856, you need to change a USB device.

**USB Connection**

- CD/Tape/Tuner Ripping**
- AZ1856 allows you to copy the music file or spoken contents of a disc/playstation to the internal USB device.
- CD ripping**
- 1 Adjust the **source selector** to **DISC/USB**.
  - 2 Insert a disc (audio CD or MP3 or WMA).
  - 3 Press **USB/CD** to enter CD mode if USB is displayed.
    - 4 Plug a USB mass storage device.
    - 5a Select the track(s) (in sequence) you want to record.
    - 5b Press **USB REC** (or **REC** on the remote) and REC appears, flashing.
    - Disc playback will start automatically from the beginning of the selected track.
  - 6 To stop recording, first, press **■** then unplug the USB device.
    - During MP3 and WMA recording, make sure the playback of the file you want to record is wholly completed before manually stop recording. Or any part of the file will not be recorded.
    - During recording, if the memory of the USB device runs out, playback will not continue.
- Helpful hints:**
- During recording, if the memory of the USB device runs out, playback will not continue.

**USB Connection**

- CD/Tape/Tuner Ripping**
- AZ1856 allows you to copy the music file or spoken contents of a disc/playstation to the internal USB device.
- CD ripping**
- 1 Adjust the **source selector** to **DISC/USB**.
  - 2 Insert a disc (audio CD or MP3 or WMA).
  - 3 Press **USB/CD** to enter CD mode if USB is displayed.
    - 4 Plug a USB mass storage device.
    - 5a Select the track(s) (in sequence) you want to record.
    - 5b Press **USB REC** (or **REC** on the remote) and REC appears, flashing.
    - Disc playback will start automatically from the beginning of the selected track.
  - 6 To stop recording, first, press **■** then unplug the USB device.
    - During MP3 and WMA recording, make sure the playback of the file you want to record is wholly completed before manually stop recording. Or any part of the file will not be recorded.
    - During recording, if the memory of the USB device runs out, playback will not continue.
- Helpful hints:**
- During recording, if the memory of the USB device runs out, playback will not continue.

**USB Connection**

- Recorded file managing**
- In your USB device, a folder named PHILIPS will be automatically created to manage all the recorded audio files.
  - Under PHILIPS folder, sub-folders starting from F001-F002-F003... will also be created to store the files recorded at different recording intervals (such as changing disc, re-plugging the USB device).
  - The recorded file(s) will be stored in either **.mp3** format (for CDMA music, or MP3 file), or **.wma** format (for WMA file).
  - For MP3 and WMA file, the file name will be directly copied as recorded file name. For CDMA music file, the file name will be changed to F001T001, F001T002....
- Helpful hints:**
- In recording mode (even the USB device is unplugged from the set), selections of track/datum, play modes (repeat and shuffle modes) are not available.
  - Copyright-protected CD will not be recorded.
  - DRM-protected WMA is not supported.
  - Do not directly unplug the USB device to stop recording for a possible loss of some of the recorded contents.
  - For some USB device of low speed, the playback may go with muted sound for some seconds which will depend on the capability of the low-speed USB device.
  - During recording, if "p.r" is displayed, it means that the disc/file being played is either copyright-protected CDMA disc or DRM-protected WMA file. Such disc/file will not be recorded. You need to change CD or skip track(s).
  - During recording, if the display shows 2-second flashing "E.r", then "u.r", it means that the file being played has been previously recorded due to the same file name as the previously recorded one. You need to skip track. Or you need to switch off and on again the set. A new sub-folder will be created to record it.

**Deleting audio files/album on a USB device**

- 1 Adjust the **source selector** to **DISC/USB**.
  - 2 Press **USB/CD** to enter USB mode if USB is NOT displayed.
  - 3 Plug a USB mass storage device.
  - 4 Select the track you want to delete before or during playback.
  - In the stop position, you may select an album to delete.
  - 5 Briefly press **DEL** on the remote.
    - "E.r" is displayed, flashing (see [3]).
    - To delete, it press **DEL** again.
    - The playback of the USB device will come to the stop position.
  - 7 To not to delete, wait until flashing "DEL" disappears after 4 seconds of flashing, or just press **■**.
- Helpful hints:**
- For some MP3 players, AZ1856 will read it as only one folder which will wrap up all the audio files on the player regardless of more than one folder on that player.
  - AZ1856 may not be able to delete a file/album stored on some MP3 players.

**Safety & Maintenance (See [10])**

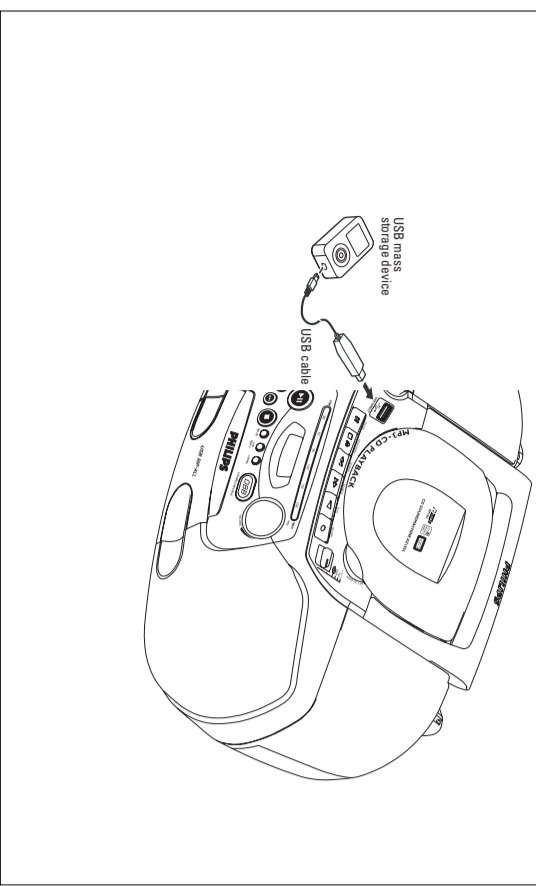
- Safety Information**
- Place the set on a hard flat and stable surface so that the system does not tilt.
  - Where the MAINS plug or an appliance coupler is used as the disconnect device, the disconnect device shall remain readily operable.
  - Do not expose the set, batteries, CDs to humidity, rain, sand or excessive heat caused by heating equipment or direct sunlight.
  - The apparatus shall not be exposed to dripping or splashing.
  - Adequate ventilation with a minimum gap of 15 cm between the ventilation holes and surrounding surfaces is necessary to prevent heat build-up.
  - The ventilation should not be impeded by covering the ventilation openings with items, such as newspapers, table-cloths, curtains, etc.
  - No objects filled with liquids, such as vases, shall be placed on the apparatus.
  - No naked flame sources, such as lighted candles, should be placed on the apparatus.
  - The mechanical parts of the set contain self-lubricating bearings and must not be oiled or lubricated.
  - To clean the set, use a dry cloth. Do not use any cleaning agents containing alcohol, ammonia, benzene or abrasives as these may harm the housing.
- CD player and CD handling**
- The CD player cannot read CDs correctly, use a cleaning CD to clean the lens before taking the set to repair.
  - The lens of the CD player should never be touched.
  - Sudden changes in the surrounding temperature cause condensation on the lens of your CD player. Playing a CD is then not possible. Do not attempt to clean the lens but leave the set in a warm environment until the moisture evaporates.
  - Always close the CD door to avoid dust on the lens.
  - To clean the CD wipe in a straight line from the center towards the edges using a soft lint-free cloth. Do not use cleaning agents as they may damage the disc.
  - Never write on a CD or attach any stickers to it.
- Cassette recorder**
- To tape a good recording and playback of the tape deck, clean parts (A), (B) and (C) show in the diagram below, after approx. 50 hours of operation, or on average once a month. Use a cotton bud slightly moistened with alcohol or a special head cleaning fluid to clean the deck.
  - Open the cassette holder by pressing **▶**.
  - Press **▶** and clean the rubber pressure rollers (D).
  - Press **▶** and clean the magnetic heads (A) and also the capstans (B).
  - After cleaning, press **▶**.
  - Cleaning of the heads can also be done by playing a cleaning cassette through once.

**Troubleshooting**

- If a fault occurs, first check the points listed below before taking the set for repair. If you are unable to remedy a problem by following these hints, consult your dealer or service centre.
- WARNING: Do not touch the set or there is a risk of electric shock. Under no circumstances should you try to repair the set yourself, as this will invalidate the guarantee.**
- No sound/ power**
- Volume not adjusted.
  - Adjust the VOLUME.
  - Power cord not securely connected.
  - Connect the power cord properly.
  - Insert (fresh) batteries correctly.
  - Disc contains non-audio files.
  - Insert a suitable disc, press **▶** or **▶** once or more to skip to an audio track, instead of the data files.
- Display does not function properly/No control to operation of any of the**
- Electrostatic discharge.
  - Switch off and unplug the set. Reconnect after a few seconds.
  - Re-connect the device, and make sure that the device is powered on.
  - The device is not securely connected to AZ1856's USB direct.
  - Use a compatible device/ playable audio file format.
- DM-protected WMA disc is not supported. The USB device doesn't play on my AZ1856**
- It is not set in the USB mode.
  - Press **CD/USB**.
  - The device is not securely connected to AZ1856's USB direct.
  - Re-connect the device, and make sure that the device is powered on.
  - The device is not supported by AZ1856.
  - Use a compatible device/ playable audio file format.
- The disc file cannot be recorded to the USB device**
- You stop recording when the MP3 or WMA file you want to record is still playing.
  - CD-R(W) is blank or the disc is not finalized.
  - WMA file is wholly completed.
  - The memory of the USB device runs out.
  - Delete some unwanted files on the USB device to free some memory, or use another USB device of sufficient free memory to record.
  - The name of a MP3 or WMA file on the disc is identical to the one of a file on the USB device.
  - Change to a different name for the file on the USB device.
- Tape operation/recording**
- Recording or playback cannot be made.
  - Clean deck parts, see "Maintenance".
  - Use only **NORMAL** (IEC J) tape.
  - Apply a piece of adhesive tape over the missing tab space.

**Information regarding USB Direct**

- INFORMATION REGARDING USB DIRECT:**
1. Compatibility of the USB connection on this product.
    - a) This product supports most USB Mass storage devices (HSD) that these devices are compliant to the USB HSD standards.
    - b) Most common Mass storage class devices are flash drives, memory sticks, jump drives and hard drives.
    - c) If you see a "Disc Drive" showing up on your computer, after you have plugged the mass storage device into your computer, most likely it is HSD compliant and it will work with this product.
    - d) If your Mass storage device requires a battery/power source, please make sure you have a fresh battery in it, or charge it into this product again.
  2. Supported Music type:
    - a) This device only supports unprotected music with file extension: mp3, wma.
    - b) Music bought from on-line music stores are not supported because they are secured by Digital Rights Management protection (DRM).
    - c) The name extensions that ended with the following are not supported: .wav, .mka, .mri, .mri+, .aac and etc.
  3. No Direct connection can be made from a Computer USB port to this product even you have skip to an audio mp3 or wma file in your computer.



- 11 Removing the insulation plastic cap.
  - 1
  - 2
  - 3
- 12

- The making of unauthorized copies of copy-protected material, including computer programmes, files, broadcasts and sound recordings, may be an infringement of copyright laws and constitute a criminal offence. This equipment should not be used for such purposes.**
- Be responsible. Respect copyrights.**

- Environmental information**
- All unnecessary packaging material has been omitted. The packaging can be easily separated into three materials: cardboard, pp/syrene and plastic.
- Your set consists of materials which can be recycled if disassembled by a specialized company. Please observe the local regulations regarding the disposal of packaging, dead batteries and old equipment.**

- Hearing Safety**
- Listen at a moderate volume**
- Using headphones at a high volume can impair your hearing. This product can produce sounds in decibel ranges that may cause hearing loss for a normal person, even for exposure less than a minute. The higher decibel ranges are offered for those that may have already experienced some hearing loss.
  - Sound can be deceiving. Over-time your hearing "comfort level" adapts to higher volumes of sound. So after prolonged listening, what sounds "normal" can actually be loud and harmful to your hearing. To guard against this, set your volume to a safe level before your hearing adapts and leave it there.
  - To establish a safe volume level:
    - Set your volume control at a low setting.
    - Slowly increase the sound until you can hear it comfortably and clearly, without distortion.
  - Prolonged exposure to sound, even at normally "safe" levels can also cause hearing loss.
  - Be sure to use your equipment reasonably and take appropriate breaks.
  - **Be sure to observe the following guidelines when using your headphones.**
    - Listen at reasonable volumes for reasonable periods of time.
    - Be careful not to adjust the volume as your hearing adapts.
    - Do not turn up the volume so high that you can't hear what's around you.
    - You should use caution or temporarily discontinue use in potentially hazardous situations. Do not use headphones while operating a motorized vehicle, cycling, skateboarding, etc.; it may create a traffic hazard and is illegal in many areas.